



European
Regional
Development
Fund



Biking South Baltic: Bicycle survey 2018 – Selected results

Venue: Main conference room at the
Office of the Marshal of Pomerania, Gdansk, Poland.
Date: Presented on 8th October, 2019
By: Carl H. Marcussen, senior researcher,
Centre for Regional and Tourism Research, Denmark.
www.crt.dk ---- <https://crt.dk/en/>

Number of responses and survey months – recreational cyclists in 5 regions of 3 countries

Month	Pomerania	West Pomerania	Mecklenburg-Vorpommern	Bornholm	DK South	Total	Total %
June	33	99	0	0	0	132	5,8%
July	1	151	0	199	205	556	24,3%
August	7	150	0	256	397	810	35,4%
September	465	0	2	0	0	467	20,4%
October	0	0	320	0	0	320	14,0%
Total	506	400	322	455	602	2285	100,0%
Total %	22%	18%	14%	20%	26%	100%	

$$+536$$

$$=858$$



European
Regional
Development
Fund



Nights spent

by recreational cyclists in 5 regions of 3 countries

Nights	Pomerania	West Pomerania	Mecklenburg-Vorpommern	Bornholm	DK South	Total
Zero	60%	32%	24%	4%	36%	33%
1-3	31%	5%	13%	17%	18%	18%
4-7	8%	33%	37%	53%	13%	27%
8-14	1%	30%	22%	20%	33%	21%
15-..	0%	1%	4%	5%	0%	2%
Total	100%	100%	100%	100%	100%	100%
Average	1,24	5,28	6,43	6,70	3,69	4,40
Responses	505	400	322	434	578	2239

Were nights spent at the **same place** each night? (nights ≥ 2)

Not same place every night:

Pomerania	78%	(n=158)
West Pomerania	34%	(267)
Mecklenburg-Vor.	27%	(233)
Bornholm	59%	(401)
DK South	59%	(348)
<u>Total</u>	<u>51%</u>	<u>(1407)</u>

Types of accommodation used by cyclists in .. average

Camping, normal 23%, primitive 8% =	31%
Hotel 17% + B&B 13% =	30%
Private home, paid 12%, free 3%	15%
Holiday cottages 10% + FeWo 3%	13%
Other	11%
<hr/>	
Total	100%
Commercial accommodations	80%
Mixed or non-commercial accom.	20%

Characterisation of the trip by overnight cyclists: Cycling holiday – cycling main motivation for ~50%

Q6 trip type 1 2 3	Pomerania	West Pomerania	Mecklenburg-Vorpommern	Bornholm	DK South	Total
1 Cycling holiday (cycling is the main motivation of the holiday)	65%	39%	48%	62%	36%	49,4%
2 Cycling as one activity whilst on holiday	34%	60%	52%	33%	51%	45,4%
3 Cycling as a means of transport during the holidays (to go to shops etc.)	1%	1%		5%	13%	5,2%
Total, percent	100%	100%	100%	100%	100%	100%
Total, respondents	206	268	243	417	371	1505

Age distribution for recreational cyclists in Poland, Germany and Denmark – ave. age

Q17 age	Pomerania	West Pomerania	Mecklenburg-Vorpommern	Bornholm	DK South	Total
(9)18-29	18%	16%	3%	19%	12%	14,1%
30-39	33%	18%	7%	23%	20%	21,3%
40-49	23%	30%	10%	22%	20%	21,3%
50-59	13%	22%	28%	19%	30%	22,4%
60-85	12%	15%	51%	16%	19%	20,8%
Total, %	100,0%	100,0%	100,0%	100,0%	100,0%	100,0%
Ave. age	41,9	44,8	58,2	43,0	47,2	46,4
Total, n	497	400	320	444	602	2263



European
Regional
Development
Fund



Home country of overnight cyclists in Poland and Bornholm

Home country	Pomerania	West Pomerania	Bornholm
Poland	64%	77%	50%
Germany	14%	19%	31%
Denmark	1%	0%	16%
Other countries	21%	4%	3%
Total	100%	100%	100%

MV, Germany: 95% domestic. – Denmark South: 48% domestic.

Hours and distance (km) cycled

Partner	Q9 hours	Q10 km
Pomerania (P2)	5,29	39,0
West Pomerania (P3)	4,79	38,6
Mecklenburg-Vorpommern	4,30	42,3
Bornholm (P6)	5,27	42,7
DK South (P7)	3,88	27,1
Total	4,69	36,9

Rented bicycle? – Electric bicycle

Partner	Q19 rented 1 0	Q20 electric
Pomerania (P2)	25%	7%
West Pomerania (P3)	33%	9%
Mecklenburg-Vorpommern	16%	39%
Bornholm (P6)	10%	16%
DK South (P7)	7%	19%
Total	17%	17%

Information sources used

Partner	Q26 1 Internet 0 1	Q26 2 book 0 1	Q26 3 brochure 0 1	Q26 4 office 0 1	Q26 5 map 0 1
Pomerania (P2)	62%	35%	5%	3%	8%
West Pomerania (P3)	61%	6%	4%	2%	17%
Mecklenburg-Vorpommern	43%	16%	14%	8%	43%
Bornholm (P6)	70%	30%	25%	10%	35%
DK South (P7)	45%	17%	19%	19%	23%
Total	56%	21%	14%	9%	24%

Spending - per by overnight cyclists

Overall, 68.61 EUR per person per night:

- 42% accommodation
- 31% food
- 9% activities
- 6% local products
- 6% transport
- 2% bicycle rental
- 5% other items or services

Spending – bicycle excursion day

Overall, 13.05 EUR per person per day

- 48% on food
- 12% activities
- 11% local products
- 12% bicycle rental
- 10% transport
- 7% other items or services



European
Regional
Development
Fund



17 bicycle traffic counters:

Pomerania:	4
West Pomerania:	3
MV, Germany:	2
South Denmark:	6
<u>Bornholm:</u>	<u>2</u>
<u>Total</u>	<u>17</u>



European
Regional
Development
Fund



Bicycle traffic fluctuations by ...

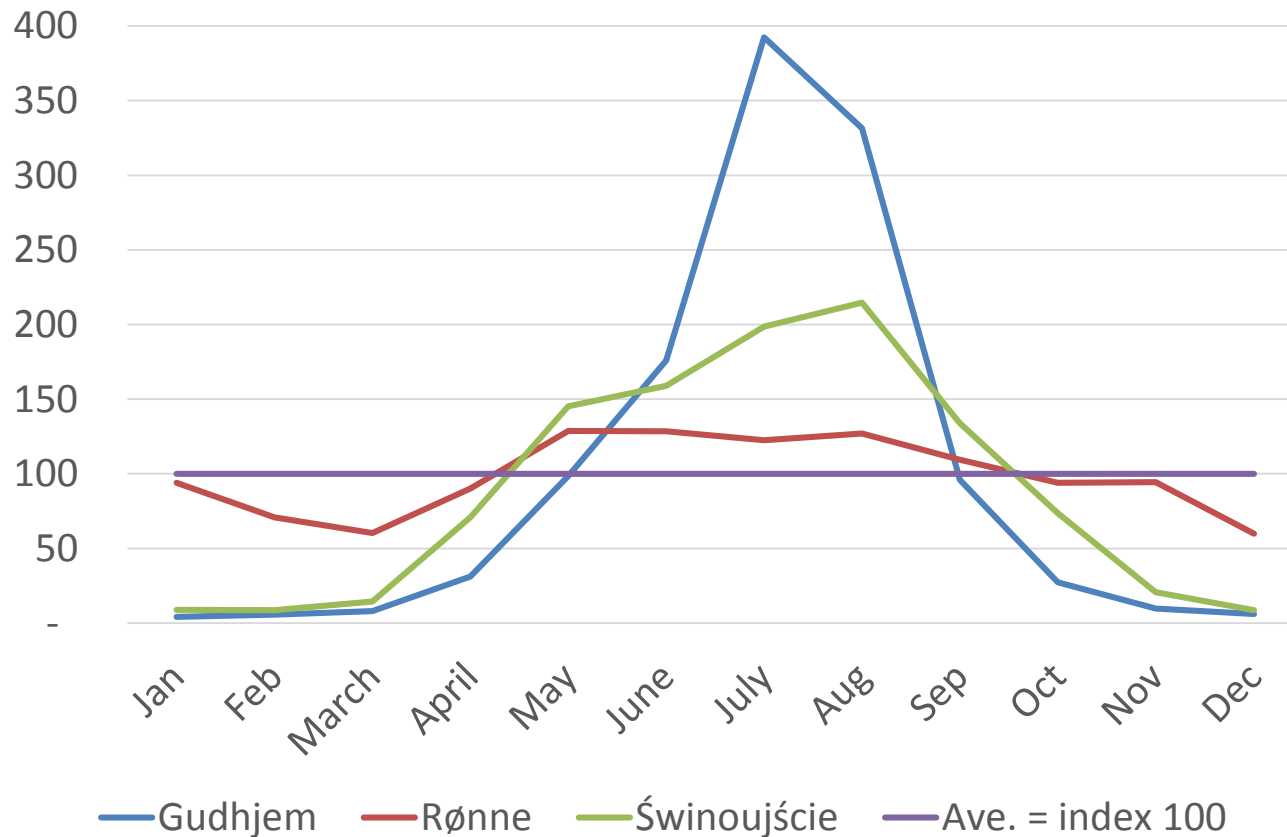
Year; Month; Week-number; Hour

Day-of-week; Weekend/workdays

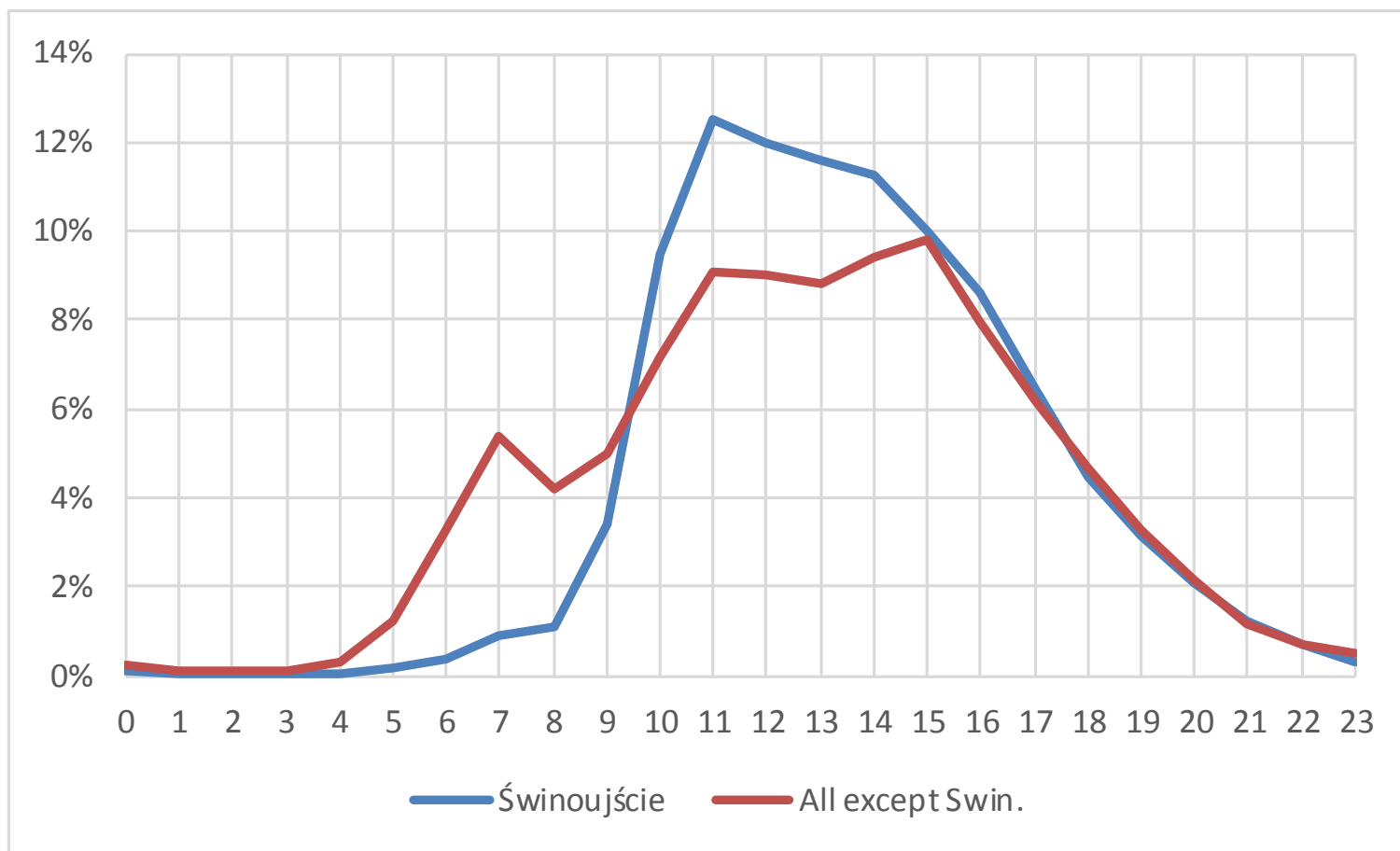
Vacation periods; Special days

Weather variables: Temperature etc.

Example: Index of hourly bicycle traffic per month



Example 2: % of daily bicycle traffic per hour



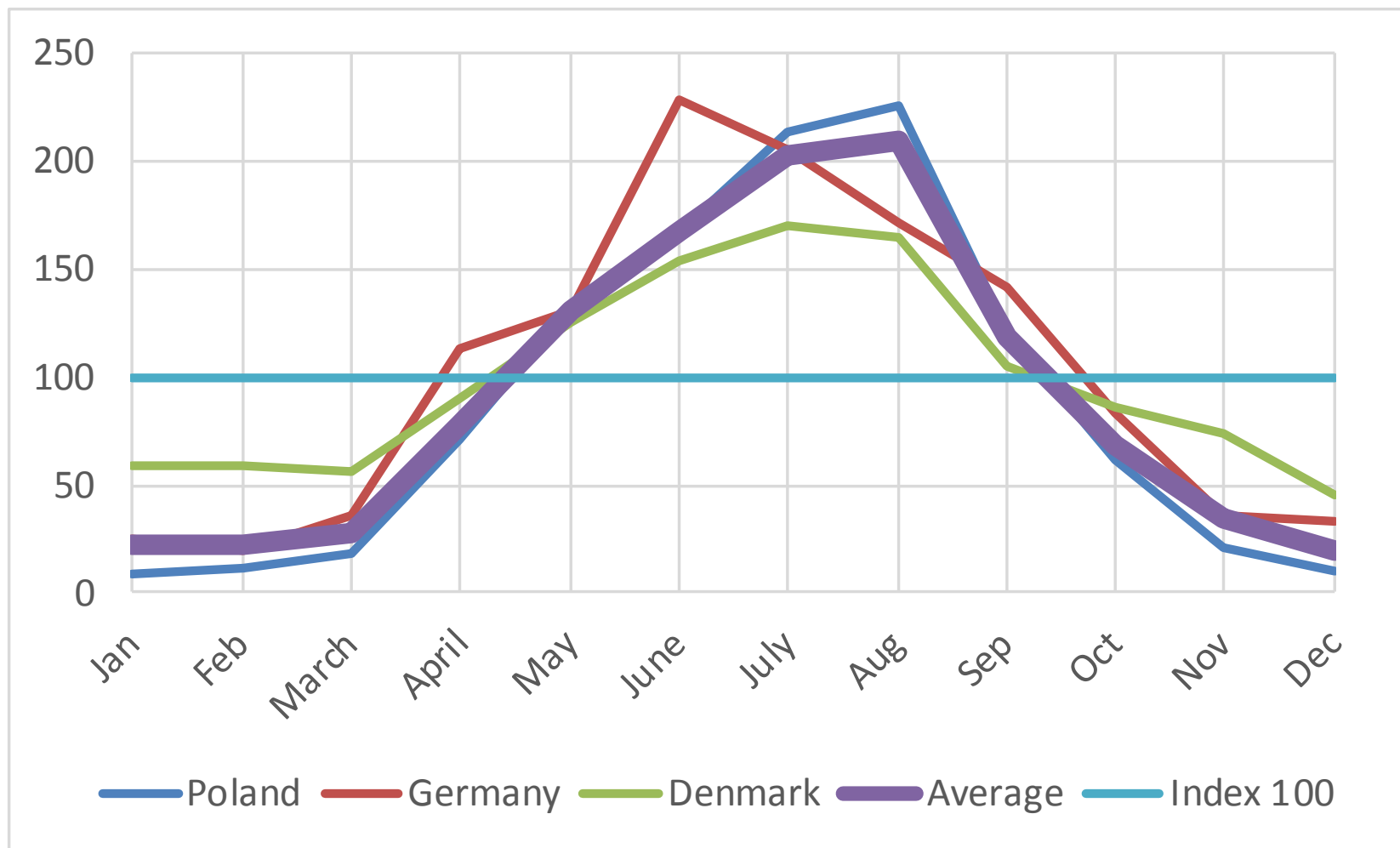
Recorded bicycle traffic per hour, averages

Counters	4	3	2	2	6	17	
Partner	P2	P3	P5	P6	P7	Total	
Area	Pomerania	W.Pomerania	Mecklenbu	Bornholm	S.Denmark	All	
Per counter per hour	7	Świnoujście: 93 Rogowo: 17 Darlowo: 10	40	5	9	5	12

P2: Pomerania
P3: West Pomerania
P5: Mecklenburg-
Vorpommern, DE
P6: Bornholm, DK
P7: Southern parts
of Denmark, DK

Counters:	7	2	8	17
Partners:	P2, P3	P5	P6, P7	Total
Country:	Poland	Germany	Denmark	All
Cyclists per hour	21	5	6	12
per counter:		(6)		

Index of bicycle traffic per hour per month





European
Regional
Development
Fund



Thank you for your attention !

URL of this presentation:

https://crt.dk/wp-content/uploads/BSB_Bicycle_Survey_Selected_Results_CRT.pdf

Full report can be downloaded here:

https://crt.dk/wp-content/uploads/2019/01/biking_south_baltic_biking_survey_results_2018.pdf

Also, early version of bicycle monitoring report:

https://crt.dk/wp-content/uploads/2018/11/Biking_South_Baltic_Bicycle_monitoring_2018.pdf

Additional links:

<https://www.prot.gda.pl/biking-south-baltic/>

<https://www.prot.gda.pl/zaproszenie-do-udzialu-w-konferencji-biking-south-baltic-8-10-2019r/>

<https://crt.dk/en/project/biking-south-baltic-2/>

<https://crt.dk/en/publications/>